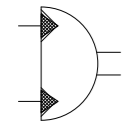
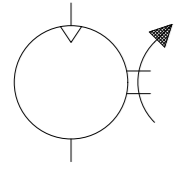


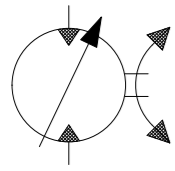
Hydraulik Drehantrieb



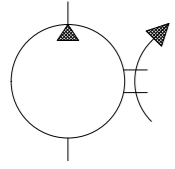
Hydraulikmotor, eine Drehrichtung



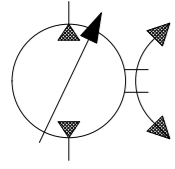
Hydraulikmotor, verstellbar, 2 Drehrichtungen



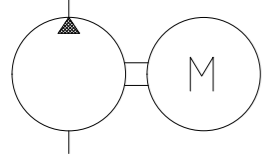
Hydraulikpumpe, konstant



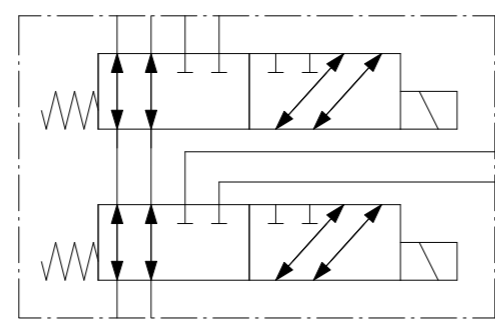
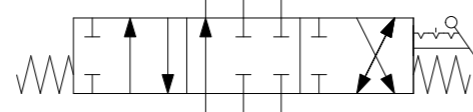
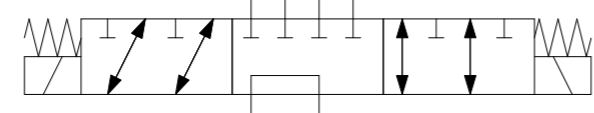
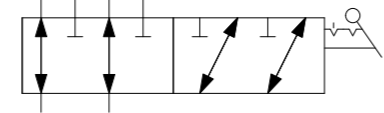
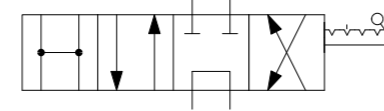
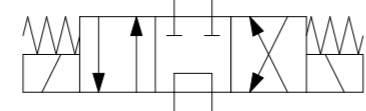
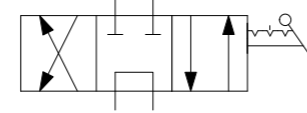
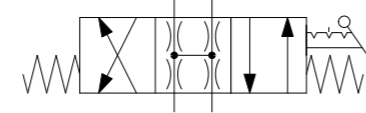
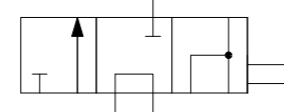
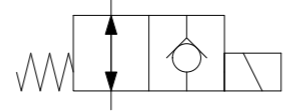
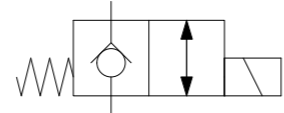
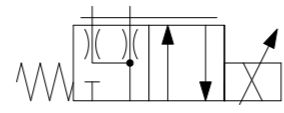
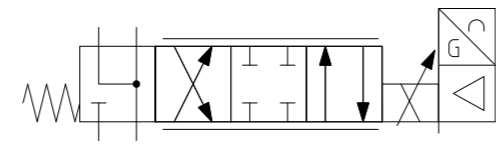
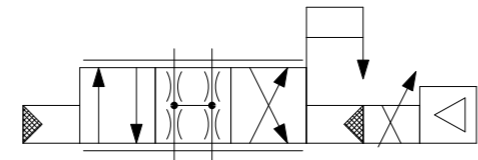
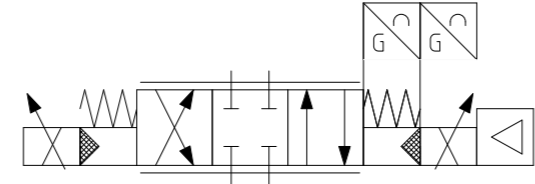
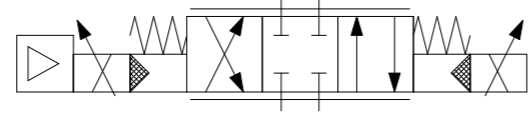
Hydraulikpumpe, verstellbar, 2 Drehrichtungen



Hydraulikpumpe



Hydraulik Tank



Elekt. betätigt, vorgesteuert, 4/3-WV,
Federzentriert, Lageregelung

Elekt. betätigt, vorgesteuert, 4/3-WV,
Federzentriert
Lageregelung

Elekt. betätigt, vorgesteuert, 4/3-WV

Elekt. betätigt, WV mit Vorzugsstellung bei
Stromausfall

Proportional-WV direkt betätigt

HYDRAULIK 2/2 WV NC

HYDRAULIK 2/2 WV NO

HYDRAULIK 3/3 WV

HYDRAULIK 4/3 WV

HYDRAULIK 4/3 WV

HYDRAULIK 4/3 WV

HYDRAULIK 4/4 WV

HYDRAULIK 6/2 WV

HYDRAULIK 6/3 WV

HYDRAULIK 6/3WV

HYDRAULIK 8/3 WV

HYDRAULIK 8/3 WV

4-x-Sperrstellung

WV-Symbol-Hydraulik-1

WV-Symbol-Hydraulik-2

WV-Symbol-Hydraulik-3

WV-Symbol-Hydraulik-4

WV-Symbol-Hydraulik-5

WV-Symbol-Hydraulik-6

WV-Symbol-Hydraulik-7

WV-Symbol-Hydraulik-8

Vorsteuerstufe

Hauptsteuerstufe

Elektronik Modul

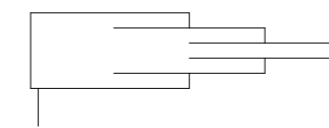
Elektronik Modul

Ansteuerung rechts

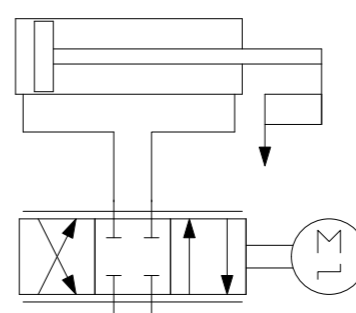
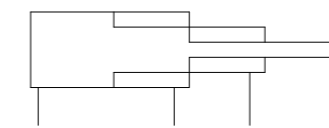
Ansteuerung links

Hydraulische
Vorsteuerung

Teleskopzylinder einfach wirkend



Teleskopzylinder doppelt wirkend



Elektrohydraulischer Linearantrieb,
Servo Ventil mit Schrittmotor

Index	Änd.-Nr.	Datum	Name	Benennung:	Änderung	Datum	Name	Zeichnungsnummer:
gezeichnet	01012020		Admin	Hydraulik				Pneumatik
geprüft								
normed								
Ursprung:				www.cad-symbole.com				
				Maßstab:	1:1	Zeichnungstyp:		Format A2
						Blatt		1 von 1