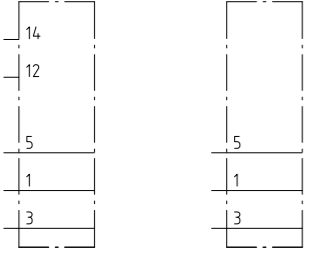


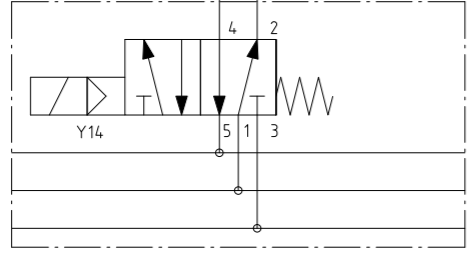
Schutzvermerk ISO 16016 beachten. / Refer to protection notice ISO 16016.

Endplatten

Extern Intern

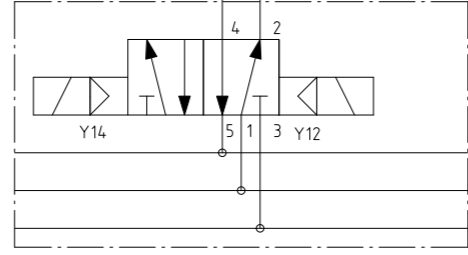


5/2 Wege Ventil



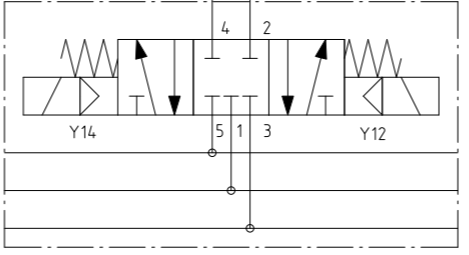
-Y100
Zylinder 1 ausfahren
Cylinder 1 out

5/2 Impulsventil



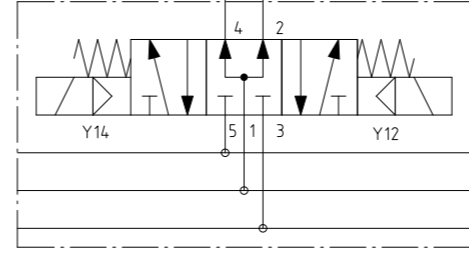
-Y100
Zylinder 1 ausfahren
Cylinder 1 out

5/3 WV NC



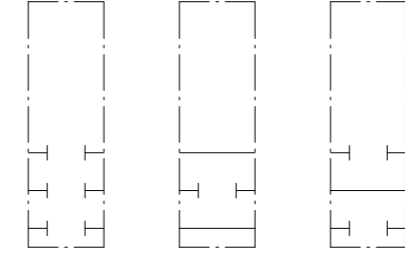
-Y100
Zylinder 1 ausfahren
Cylinder 1 out

5/3 WV NO

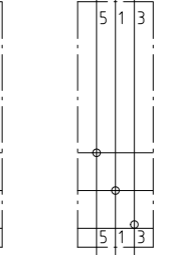


-Y100
Zylinder 1 ausfahren
Cylinder 1 out

Absperrung

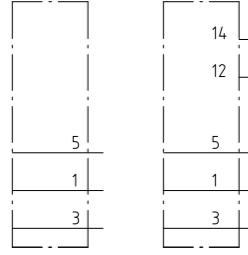


Einspeisung

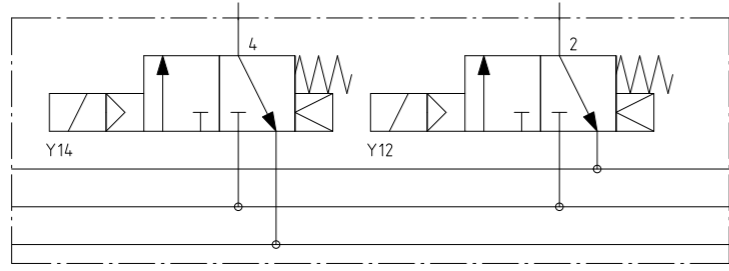


Endplatten

Intern Extern

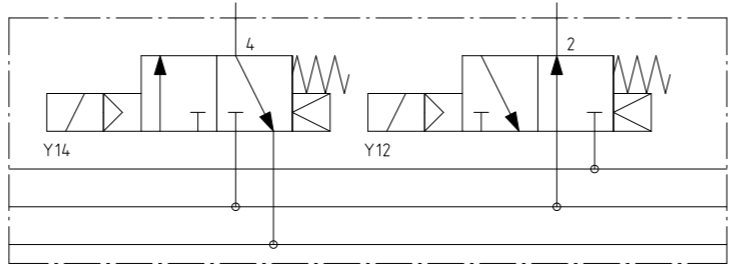


3/2 (2x) WV NC/NC



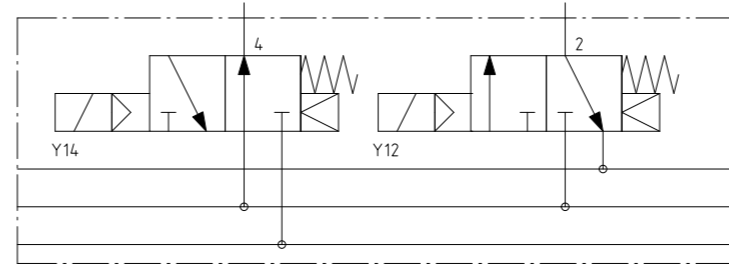
-Y100 -Y110
Zylinder 1 ausfahren
Cylinder 1 out

3/2 (2x) WV NC/NO



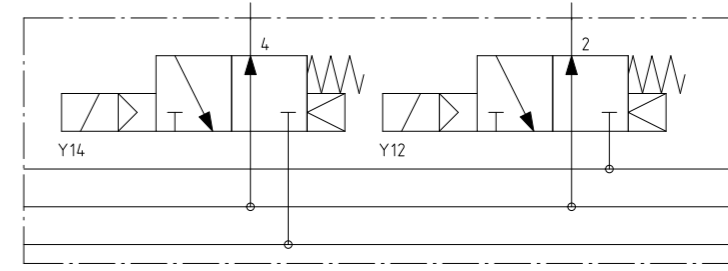
-Y100 -Y110
Zylinder 1 ausfahren
Cylinder 1 out

3/2 (2x) WV NO/NC



-Y100 -Y110
Zylinder 1 ausfahren
Cylinder 1 out

3/2 (2x) WV NO/NO



-Y100 -Y110
Zylinder 1 ausfahren
Cylinder 1 out

| Index | Änd.-Nr. | Änderung | | Datum | Name |
|------------|------------|----------|-------|------------------------------------|--------------------------|
| gezeichnet | 01.01.2020 | Name | Admin | Benennung: Ventilinseln | |
| geprüft | | | | Zeichnungsnummer: Pneumatiksymbole | |
| normed | | | | www.cad-symbole.com | |
| Ursprung: | | | | Maßstab: 1:1 | Zeichnungstyp: Format A2 |
| | | | | Blatt 1 von 1 | |