

Schutzvermerk nach DIN 34 beachten

## Sperr- und Stromventile

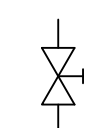
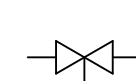
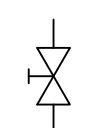
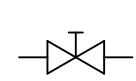
Einbausituation 1 - horizontal

2 - vertikal

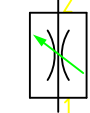
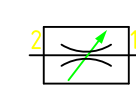
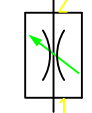
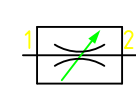
3 - horizontal gespiegelt

4 - vertikal gespiegelt

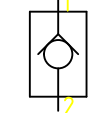
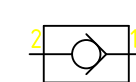
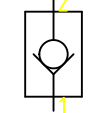
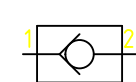
Absperrhahn



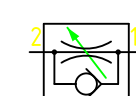
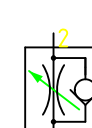
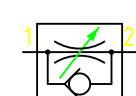
Drosselventil



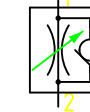
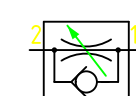
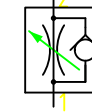
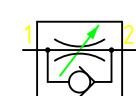
Rückschlagventil



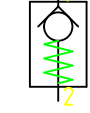
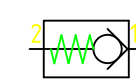
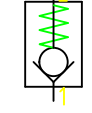
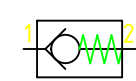
Drosselrückschlagventil Abluftdrossel



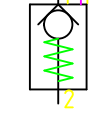
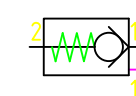
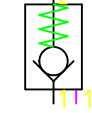
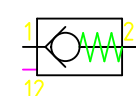
Drosselrückschlagventil Zuluftdrossel



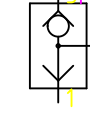
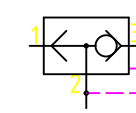
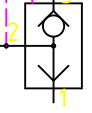
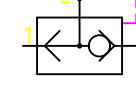
Rückschlagventil mit Feder



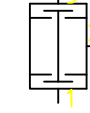
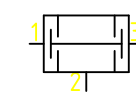
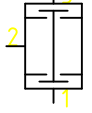
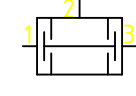
Rückschlagventil Entsperrbar



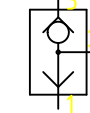
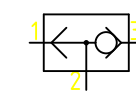
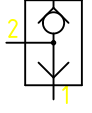
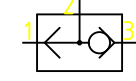
Schnellentlüfungsventil



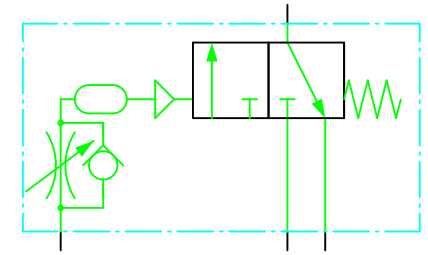
Und-Glied



Oder-Glied



Zeitglied



Ind.	Mittlgs.-Nr.	Datum	Name	Benennung	Änderung	Datum	Name
Erstellt	01.01.2019	Admin		Stromventile			
Gepf.							
Norm.							
entstanden aus:				www.pneumatikplan.de			
						Maßstab	1:1
						Zeichnungstyp:	Format A2
						1 von 1	